

DRG. No.
PCG/ATX/CRD

DO NOT SCALE OFF DRAWING "IF IN DOUBT ASK".
REPORT ALL ERRORS AND ALTERATIONS.

THIRD ANGLE PROJECTION

MARKING

1. EXAMPLE OF MARKING ON BAND:-

PEPPERS GU15 3BT UK Ex II 1D II 2G
CR-DB 20S M20 BAS 01ATEX2271X
Exdb IIC Gb / Exeb IIC Gb / Ex ta IIIC Da
IECEx SIR 07.0099X IP66 IP68

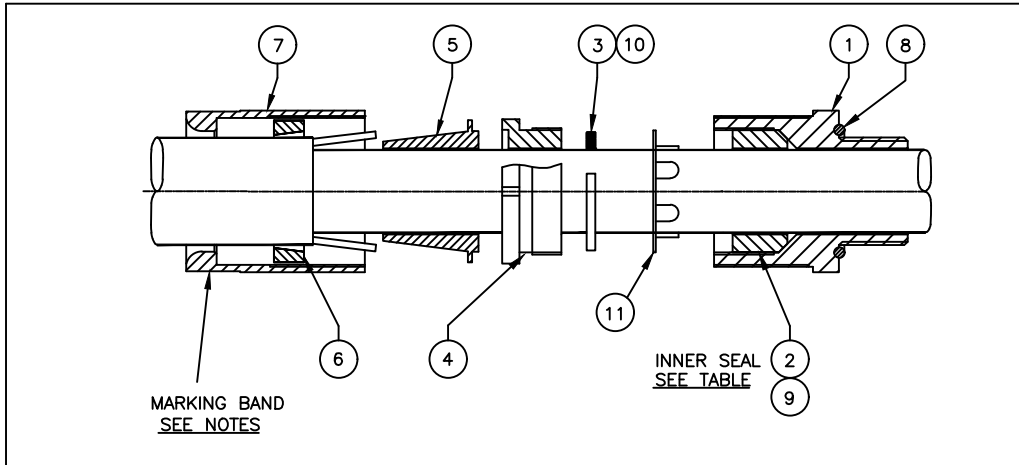
2. SPECIAL MARKS:-

Ex II 3GD Ex nR II
SIRA 09ATEX1221X

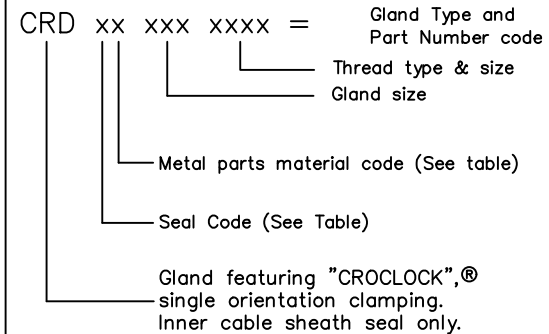
Marking and other information may be present on the gland or on the packaging in accordance with document PCG/ATX/PEXMP.

DRAWN ASC
DATE 27/04/09
CHECKED
APPROVED
CAD REF PCGATXCRD
SCALE N.T.S

- ISSUE
- Original
 - Marking updated to comply with latest 60079 Series & to include ExtD marking.
 - 23/07/09
Updated to include Ex nR II marking.
 - 02/09/09
Updated to correct 82N and 82V seal information details and to correct skid washer drawings for gland assembly.
 - 23/08/12
Marking updated. Options and notes clarified. Continuity washers added. Now 2 page drawing.
 - 23/06/17
Marking updated. Standard Entry Thread column added. Note i added.



GLAND TYPE NUMBERING



PARTS LIST & CERTIFICATE CROSS-REFERENCE

Balloon Ref	Part Description	Drawing Number	Alternate Drawing Number	Other Certificate Nos. used on	Other Certificate Nos. used on	Other Certificate Nos. used on
1	ENTRY BODY	PCG/ATX/1V	PCG/ATX/1VT	---	---	---
2	INNER SEAL	PCG/ATX/82N	---	SIRA 01ATEX1272X	SIRA 03ATEX1479X	---
3	INNER SKID WASHER	PCG/ATX/91A	---	SIRA 01ATEX1272X	SIRA 03ATEX1479X	---
4	COMPRESSION NUT	PCG/ATX/8V	---	---	---	---
5	CONE	PCG/ATX/3V	---	---	---	---
6	CLAMP RING	PCG/ATX/10V	---	SIRA 03ATEX1479X	---	---
7	CAP	PCG/ATX/4V	---	---	---	---
8	O-RING SEAL	PCG/ETOR	---	---	---	---
9	INNER SEAL	PCG/ATX/82V	---	SIRA 01ATEX1272X	SIRA 03ATEX1479X	---
10	INNER SKID WASHER	PCG/ATX/91V	---	---	---	---
11	CONTINUITY WASHER	PCG/LW2	PCG/LW3	SIRA 01ATEX1272X	---	---

X-REFS:-
CSCRD
TABCRD
ISS1ORIG
CA0

PEPPERS CABLE GLANDS LIMITED
STANHOPE ROAD, CAMBERLEY, SURREY, UK.
TEL +44 (0)1276 64232, FAX +44 (0)1276 691752

TITLE ATEX RANGE GLANDS FOR ARMoured/
UNARMoured/BRAIDED/SCREENED CABLE
CR-D** FAMILY - Sht 1 of 2

The design and manufacturing information contained in this drawing is the exclusive right of PEPPERS CABLE GLANDS LTD and must not be copied or used for manufacturing purposes without express authority in writing from the said company.

DRG. No.
PCG/ATX/CRD
ISSUE 6

THIS DRAWING IS OF A CERTIFIED COMPONENT, AND NO CHANGES MUST BE MADE WITHOUT REFERENCE TO THE CERTIFYING AUTHORITY.

DRG. No.
PCG/ATX/CRD

DO NOT SCALE OFF DRAWING "IF IN DOUBT ASK".
REPORT ALL ERRORS AND ALTERATIONS.

THIRD ANGLE PROJECTION

DRAWN ASC
DATE 27/04/09
CHECKED
APPROVED
CAD REF PCGATXCRD
SCALE N.T.S.

ISSUE
1. Original
2. Marking updated to comply with latest 60079 Series & to include ExtD marking.

3. 23/07/09
Updated to include Ex nR II marking.

4. 02/09/09
Updated to correct 82N and 82V seal information details and to correct skid washer drawings for gland assembly.

5. 23/08/12
Marking updated. Options and notes clarified. Continuity washers added. Now 2 page drawing.

6. 23/06/17
Marking updated. Standard Entry Thread column added. Note i added.

X-REFS: -

OPTIONS & GLAND TYPE NUMBERING

SEAL CODES (TYPE AND TEMPERATURE) (a)

CODE	INNER SEAL	OUTER SEAL	OPERATING TEMP. RANGE
1	82NI	-	-35°C to +90°C
2 (b)	82NI	-	-35°C to +90°C
3	82NIS	-	-60°C to +180°C
4 (b)	82NIS	-	-60°C to +180°C

METAL PARTS MATERIAL CODES


CODE	MEANING
B	MAIN GLAND COMPONENTS ARE BRASS
S	MAIN GLAND COMPONENTS ARE STAINLESS STEEL

NOTES

- a Neoprene seals are colour black (parts 82NI/82VI).
Silicone seals are colour white (parts 82NIS/82VIS).
- b Codes 2 and 4 indicate continuity washer for lead sheathed cable. Available in sizes 20s to 100. Sizes 20S, 50S, 50 & 100 use LW3 washer. All other sizes use LW2 washer.
- c Size 16 glands are assembled from Size 20S parts except the 2M0 seals. The 82N & 91A parts are replaced with 82V & 91V parts respectively.
- d Size 50S and 50 glands use 82V seals in place of 82N seals and 91V skid washers, in place of 91A skid washers.
- e Size 50S, 63s and 75s use size 50, 63 and 75 3V and 8V components.
- f Nitrile O-rings part OR are used with code 1 & 2 glands.
Silicone O-rings part OR are used with code 3 & 4 glands.
- g Stainless Steel glands may have marking electrochemically etched.
- h Plating may be applied to any or all main gland body components. Maximum thickness of plating is 0.008mm.
- Special uses for this gland:-
Provided the cable is rigidly restrained close to the entry,
(1) Braid or screen may be clamped in the armour clamp
(2) Braid/screen/armour may be passed through the gland for clamping inside the terminating equipment
- i For alternative threads and trade sizes refer to drawing PCG/ETDMV

GLAND SIZE (b)	Standard Entry Threads		ARMOUR DIA/THICKNESS STEEL WIRE & TAPE (Universal) or Braid/Screen(c)	INNER SHEATH		OUTER SHEATH	
	Metric	NPT		MIN	MAX	MIN	MAX
16	M20	1/2" NPT	0.15 - 1.25	3.4	8.4	-	16.0
20S	M20	1/2" NPT	0.15 - 1.25	7.2	11.7	-	16.0
20	M20	1/2" NPT	0.15 - 1.25	9.4	14.0	-	21.0
25	M25	3/4" NPT	0.15 - 1.6	13.5	20.0	-	27.5
32	M32	1" NPT	0.15 - 2.0	19.5	26.3	-	34.0
40	M40	1 1/4" NPT	0.2 - 2.0	23.0	32.2	-	40.6
50S	M50	1 1/2" NPT	0.2 - 2.5	28.1	38.2	-	53.2
50	M50	2" NPT	0.3 - 2.5	33.1	44.1	-	53.2
63S	M63	2" NPT	0.3 - 2.5	39.2	50.1	-	65.8
63	M63	2 1/2" NPT	0.3 - 2.5	46.7	56.0	-	65.8
75S	M75	2 1/2" NPT	0.3 - 2.5	52.1	62.0	-	78.0
75	M75	3" NPT	0.3 - 2.5	58.0	68.0	-	78.0
80	M80	3" NPT	0.45 - 3.15	62.2	72.0	-	90.0
85	M85	3" NPT	0.45 - 3.15	69.0	78.0	-	90.0
90	M90	3 1/2" NPT	0.45 - 3.15	74.0	84.0	-	102.0
100	M100	3 1/2" NPT	0.45 - 3.15	82.0	90.0	-	102.0

THIS DRAWING IS OF A CERTIFIED COMPONENT, AND NO CHANGES MUST BE MADE WITHOUT REFERENCE TO THE CERTIFYING AUTHORITY.

 PEPPERS CABLE GLANDS LIMITED
STANHOPE ROAD, CAMBERLEY, SURREY, UK.
TEL +44 (0)1276 64232, FAX +44 (0)1276 691752

TITLE ATEX RANGE GLANDS FOR ARMoured/
UNARMoured/BRAIDed/SCREENed CABLE
CR-D** FAMILY - Sht 2 of 2

The design and manufacturing information contained in this drawing is the exclusive right of PEPPERS CABLE GLANDS LTD and must not be copied or used for manufacturing purposes without express authority in writing from the said company.

DRG. No.
PCG/ATX/CRD

ISSUE 6